

**Antenna Men Tower Pricing**

Mfg	Model	Installed		Bags 80#	80# WT.	Net height	Net Height
		Net	Total			w/ 15' Mast (add \$60)	w/20' Mast (add \$80)
						Above	Above Ground
						Ground Level	Level
Delhi	DMX-28	24'	\$1,600	45	3600	36'	41'
Delhi	DMX-36	32'	\$2,000	68	5400	44'	49'
Delhi	DMX-44	40'	\$2,400	90	7200	52'	57'
Delhi	DMX-52	48'	\$2,750	135	10800	60'	65'
Delhi	DMX-60	56'	\$3,150	146	11700	69'	73'
Delhi	DMX-68	64'	\$3,500	158	12600	76'	81'

*Delhi Towers are "free standing" self-support towers. They require from 1 yd. to 3.5 yds. of concrete!*

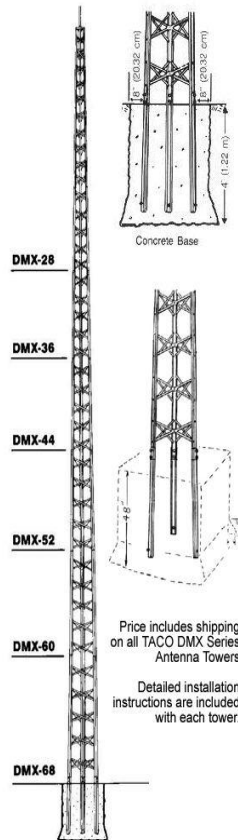
Rohn	AME 25/bkt	25'	\$821	7	540	37'	42'
Rohn	AME 25/bkt	35'	\$1,089	9	720	47'	52'
Rohn	AME 25/bkt	45'	\$1,346	11	900	57'	62'
Rohn	AME 25/bkt	55'	\$1,608	14	1080	67'	72'

1 Pc.	20' Economy	20'	\$500			32'	
1 Pc.	30' Economy	30'	\$600			42'	

The Antenna Men also have several used towers & tower sections in stock for those situations where a customer wants to save some money on the tower.

Contact us 517.646.0439 \* 517.740.1533 \* 269.967.8241 or by e-mail:

**Wade/Taco/Delhi Tower**



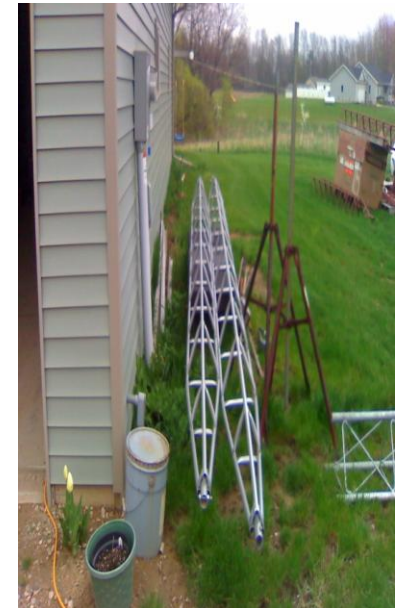
**American/Rohn 25G Tower**



25G normally bracketed or guyed



**One piece towers Sit on a Ground Spike & Attach to House On Gable with Bracket**



These one piece 20' & 30' towers are made of 3/4" steel and install very easily & quickly. The base sits on an 1 1/4" ground peg and the tower attaches to the home on the fascia of a gable or eave.